

SSNAP Dataset Changes 2024

Data entry webinar

SSNAP

**Sentinel Stroke National
Audit Programme**



Contents



1. Introduction



2. Timeline of dataset changes



3. Changes to webtool



4. Resources and tools



5. Next steps and Q&A

Introduction

Netiquette



Please do not raise your hand to ask a question as we are not able to hear you!



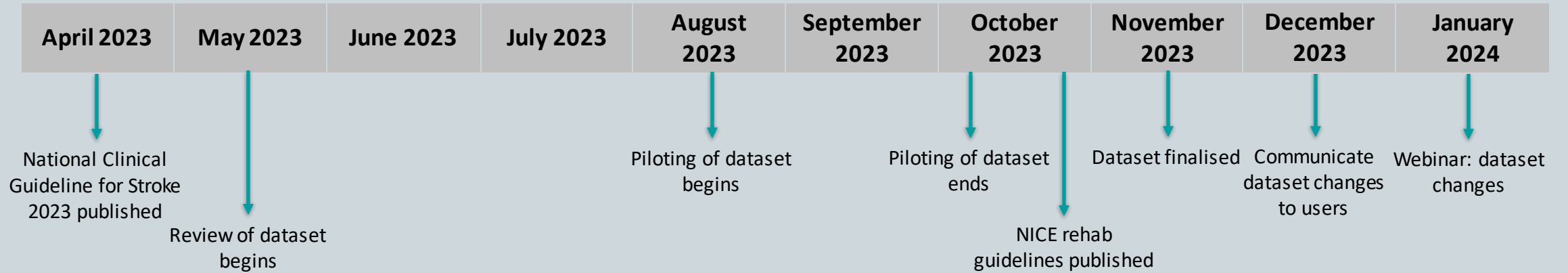
The Q&A function available throughout the webinar. We will be addressing questions at the end.



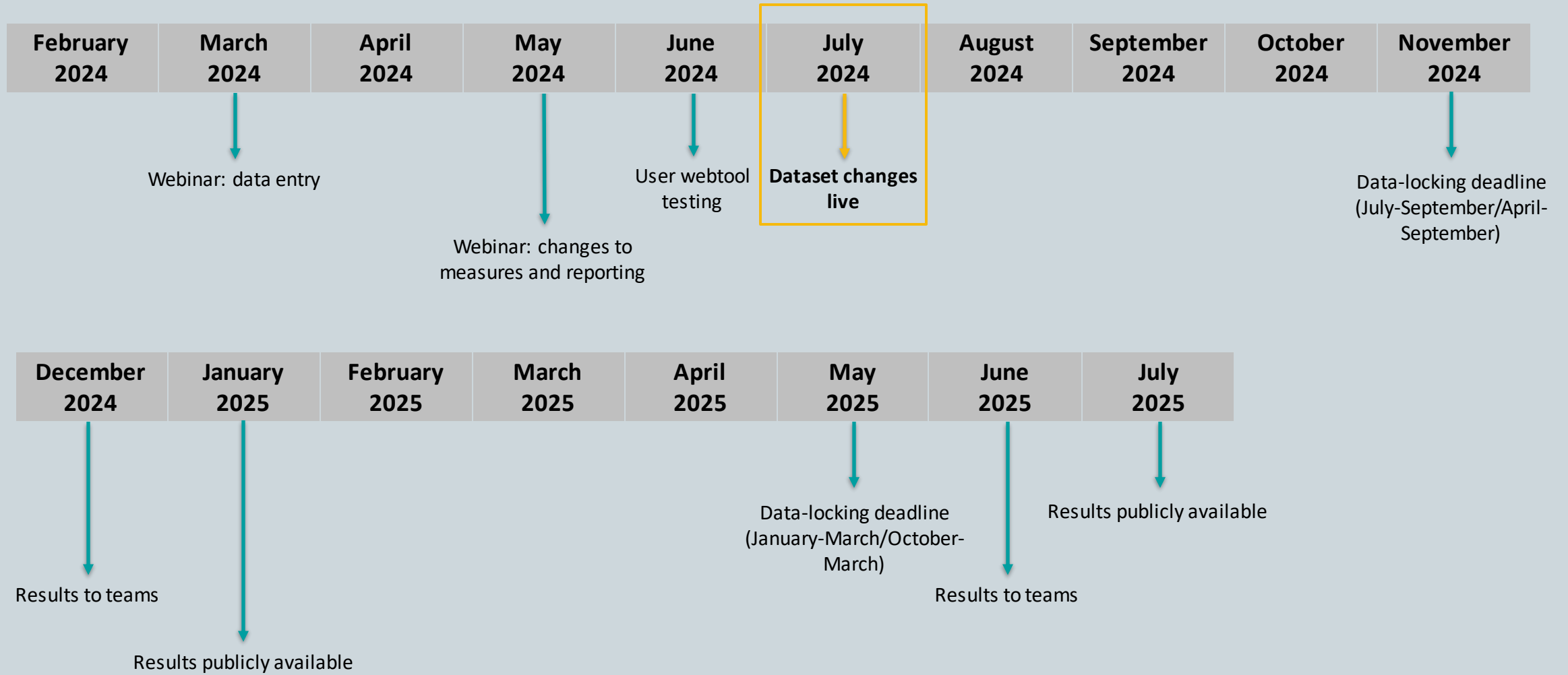
We may not be able to respond to your query during the webinar. However, we will endeavour to include responses to new queries in future resources/communications.

Timeline of dataset changes

What has happened so far..



Coming up..



Changes to data entry

Data-entry platform changes



- From July we are moving to a new more flexible data entry platform.
- Data entry will remain largely the same on the updated webtool and you and your team will be automatically moved over, however there are some things to check before July.

Actions for you:

- Make sure the list of users registered for your team is up to date
- Make sure there is a **lead** and **second lead** registered for your team
- Let us know if anyone should be removed from your team list
- Make sure your registered email address is correct
- Check that everyone who should have access to SSNAP has a unique account set up

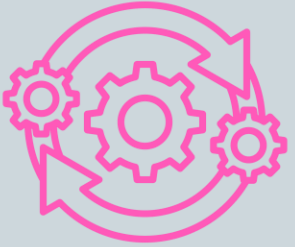
Benefits to the new system

Ability to do an import at several stages of the pathway

Improvements to the six-month assessment tool

Data visualisations within the data entry platform

Data locking deadlines:



Changing datasets:

Period	Data locking deadline	Dataset
Oct-Mar24	May	Existing
Apr-Sep24	Nov	Existing + New
Oct-Mar25	May	New

- Therefore, there will be a brief period where you may be entering data for patients on both datasets.
- For data entry from 1st July you will not have to enter therapy days, applicability and minutes for the **EXISTING** dataset.

Importing data



For the first time, community teams will have a section 4 and 7 different from the inpatient teams.



With the new dataset, community teams will be able to import data.



The Import/Export Specification will be made available in April. This will be helpful for data collection.



We will provide the csv. and the import rules. We will not be syncing via an EPR system.

Resources and tools available

Resources

Webtool Page
(logged in)

Therapy
calculator

Paper
Proforma

DIY analysis
tool

Shared
learning space

Data entry tool

ENTER PATIENT THERAPY INFO HERE

Free text columns for local notes from CW onwards!

Enter patient level data below. The totals will automatically be updated on the 'Therapy Summary Sheet' tab

[Click here to go to 'Notes'](#)

Patient ID number	Patient details	Stroke or Neuro?	Q4.1 Date/time patient received first face-to-face assessment from this service dd/mm/yyyy	Date/time of discharge/transfer from team	Therapy	Q4.5 Was the patient considered to require this therapy at any point? (Yes/No)	Minutes received (mmm)
1234567	Surname:	Stroke	01/07/2022		a) Motor function (Qualified)	Yes	
	Example				a) Motor function (Assistant)		
	DOB:				a) Motor function (teletherapy)		
	01/01/1950				a) Motor function (group sessions)		
					b) Psychological function (Qualified)	No	
					b) Psychological function (Assistant)		
					b) Psychological function (teletherapy)		
					b) Psychological function (group sessions)		
					c) Communication/swallowing (Qualified)	Yes	
					c) Communication/swallowing (Assistant)		
					c) Communication/swallowing (teletherapy)		
					c) Communication/swallowing (group sessions)		

01/07/2024

SUMMARY SHEET

Data on this sheet will automatically update
Please make any changes to the 'Therapy data' tab

Patient ID number	Patient details	Therapy	4.5 Considered to require this care or treatment at any point during this stay?	Date/time of discharge/transfer from team	FOR REFERENCE Are all the days therapy was received within the patient's stay?	4.7 On how many DAYS did the patient receive this care/treatment during this 4 week period?	4.8 How many MINUTES of this care/treatment in TOTAL did the patient receive during this 4 week period?	4.9 How many of these MINUTES were delivered by a rehabilitation assistant? (Assistant)	
1234567	Surname:	a) Motor function	Yes	30/09/2024	Yes	5	440	110	
	Example	b) Psychological function	No		Yes	0	0	0	
	DOB:	c) Communication/swallowing	Yes	30/09/2024	Yes	3	450	120	
	01/01/1950		d) Vocational rehabilitation	Yes	30/09/2024	Yes	2	260	100
			e) Healthy living and lifestyle management	Yes	30/09/2024	Yes	1	22	15
			f) Social care needs and care delivery	No		Yes	0	0	0
			g) Other	No		Yes	0	0	0

Collecting and importing data



Review how data is collected in your teams and when and how best to use the help notes to optimise consistency



Electronic methods would help reduce data entry errors and be more time efficient. The therapy calculator could be used to visualise these data



The Import/Export Specification (for creating csv files) should be used to inform how to electronically format data for importing directly to SSNAP



Change local EPR systems so that you can export csv files for direct upload to SSNAP



Next steps and Q&A

Thank you

Thank you to all the ambulance trusts, hospitals and community teams for continuing to participate in SSNAP. Their participation and commitment to the audit ensures that quality, rich data is available which can be used to improve stroke services.

Sentinel Stroke National Audit Programme (SSNAP)

ssnap@kcl.ac.uk

www.strokeaudit.org